

# Brooke's Bits & Pieces

SECTION 6 | EDITION 4 | May 2026



**2025-2026 Wisconsin State FFA Officer Team; Back row (L to R): Sam Mell, Layten Sobieski, Max Luedtke, Ava Forde, Parker Smith. Middle row (L to R): Brooke Luedtke, Corbyn Weber, Taniele Ducommun. Front row (L to R): Harley Prill, Amalia Draxler, Evan Retzlaff.**



**ACTIVATE**  
WISCONSIN ASSOCIATION OF FFA

## TABLE OF CONTENTS

---

**State Officer Farewell • P.2**  
**LDEs • P.3**  
**Spring Highlights • P.4**  
**Banquets • P.7**  
**Convention Preview • P.8**  
**Member of the Month • P.9**  
**Let's Connect • P.11**

# OFFICER UPDATE

## Section 6 State Treasurer



I can't believe it is already May. This year has been such an amazing experience, and I truly can't thank you all enough for choosing me to lead Section 6. Serving in this role has meant more to me than I can fully put into words.

It has been incredible getting to attend each and every one of your banquets and seeing firsthand the dedication, passion, and pride you pour into your SAEs and local events. Watching you grow as leaders, teammates, and individuals has been so inspiring. Thank you for welcoming me into your chapters, for sharing your stories, and for allowing me to be part of so many special moments. Each of you has made an impact on me, and I will carry those memories and lessons with me long after this year is over.

One thing I want to leave you all with is this: say yes to every opportunity that comes your way. Step outside of your comfort zone, take the chance, and trust yourself. You never know what doors it might open, who you might meet, or the path it could lead you down. Some of the most meaningful experiences come from the moments that feel a little uncertain at first. Continue to lead with heart, work hard, and support those around you. Lift each other up, and celebrate the wins, big and small, and never underestimate the difference you can make. I am so proud of each and every one of you, and I feel incredibly lucky to have been part of your journey this year. I can't wait to celebrate all of your accomplishments at State Convention. As you head into this next school year, I wish you all the very best. Keep saying yes, keep growing, and keep becoming the leaders you were meant to be. I know your futures are incredibly bright. ❤️

With gratitude and excitement,

*Brooke Luedtke*

# ★ Sectional LDE Winners ★

(These individuals will be competing at State, with results announced on June 17th during the Third Session of State Convention.)

## Creed Speaking



**Nicholas Dahlke**  
*Adams- Friendship FFA Chapter*

## Prepared Speaking



**Oscar Stowell**  
*Waupun FFA Chapter*

## Extemporaneous Speaking



**William Homman**  
*Rio FFA Chapter*

## Employment Skills



**Blake Brancel**  
*Portage FFA Chapter*

## Discussion Meet



**Josie Roberts**  
*Portage FFA Chapter*

## Quiz Bowl



*Waupun FFA Chapter*

“Success is not measured by what you achieve alone, but by the impact you leave on others along the way.”



—Robert Louis Stevenson

## Parliamentary Procedure



*Mauston FFA Chapter*

# Spring Highlights

## F.I.R.E CONFERENCE

FIRE Conference gave 5th–9th grade members the opportunity to explore what FFA has to offer while connecting with other members from across the state. Through hands-on activities and engaging sessions, participants were able to strengthen their leadership skills and gain a deeper understanding of the organization. The experience encouraged members to step outside of their comfort zones, build confidence, and form meaningful connections that will carry forward in their FFA journey.



## EDGE and MISSION

The Mission and EDGE Conference was a great opportunity for members to learn more about the environment they are placing themselves in and how their friendships, choices, and attitudes can impact their lives. It encouraged personal growth, self-reflection, and making positive decisions while also allowing members to connect with others and build stronger relationships throughout the experience. The conference created a meaningful space for members to grow as individuals and as leaders within FFA. To close out the event, everyone came together to celebrate at a Minion themed dance, making it a fun and memorable way to end an impactful experience.

# Spring Highlights

## Fox Valley CDEs

At the Fox Valley CDEs, members from all over Wisconsin came together to compete in a variety of Career Development Events. The event I participated in was the Veterinary Science CDE. Students were responsible for identifying animals, procedures, and tools that veterinarians use. We also completed a practicum where we demonstrated how to properly treat a wound, followed by a 50-question multiple-choice exam that tested our knowledge and understanding.



## Oshkosh Farm Show



During our time at the Oshkosh Farm Show, we had the opportunity to sell raffle tickets to many visitors at the event. We also assisted with the silent auction and networked with a wide variety of people, some who were already familiar with FFA and others learning about it for the first time.

These conversations allow us to share the impact of FFA and the opportunities it provides, while also strengthening our communication and people skills. It was a great experience to represent FFA and connect with the community in such a meaningful way.

# Spring Highlights

## State CDEs



During State CDEs, we had the opportunity to transport students throughout the MATC campus, helping them get where they needed to be so they could compete at the state level. It became so much more than just helping with logistics. We got to cheer students on, calm their nerves, ask how they were doing, and celebrate those little moments with them. Some of my favorite memories came from simply being there, watching the excitement, the hard work, and the pride shown through in each of them. We even got to experience parts of it ourselves, like the food science smells and tastes, which made it all feel even more real and memorable.



## Food For America

Food for America at Lodi, Baraboo, Poynette, and Reedsburg was another highlight of the spring. Seeing students share their knowledge of agriculture with fourth graders was really inspiring, especially because for many of those kids, this may be one of the only chances they get to learn what people in agriculture actually do every day. It was amazing to watch them connect, teach, and help younger students better understand the importance of agriculture in their daily lives. You could really see the confidence and passion in the students as they stepped into leadership roles, explaining concepts, answering questions, and making learning fun and interactive.

Thank you for letting me be part of your banquets. You all are such an inspiration. I have enjoyed watching you all grow and lead this organization.

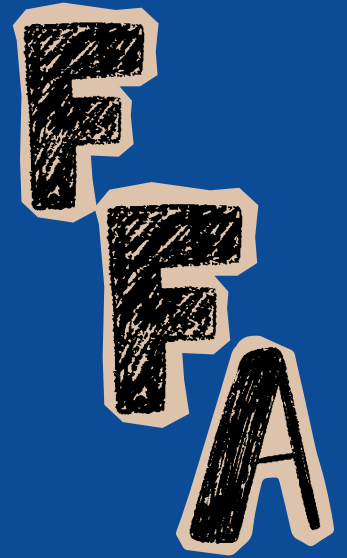


# Banquets



# Convention Preview

**Keynote Speaker**  
**Tuesday Opening Session**  
**T. Wayne Williams**  
**2025-2026**  
**National FFA Southern**  
**Region Vice President**



**Keynote Speaker**  
**Temple Grandin**  
**Wednesday Afternoon**  
**Session**  
**2:00 p.m. following**  
**State Degree**  
**Ceremony**



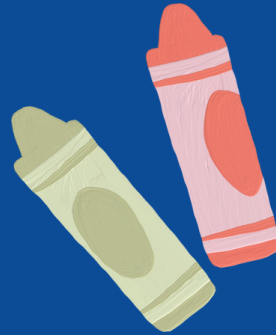
**Entertainment**  
**Hailey James**  
**Concert**  
**Following Tuesday**  
**Evening Session**  
**9:30 p.m.**  
**\$20.00 per person**



# MEMBER OF THE MONTH

## SEPTEMBER

Molly Groskreutz  
Westfield FFA



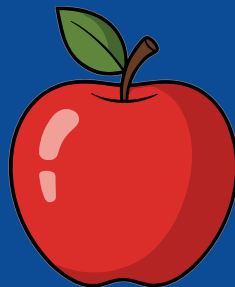
## OCTOBER

Ashley Dretske  
Berlin FFA



## NOVEMBER

Jo Sadogierski  
Portage FFA



## DECEMBER

Nancy Hansen  
Adams-Friendship FFA



# MEMBER OF THE MONTH

## JANUARY

JJ Davidson

Poynette FFA

## FEBRUARY

Logan Sorg

Sauk Prairie FFA



## MARCH

Khammi Alsum

Wisconsin Dells FFA



## APRIL

Dawson Shaw

Waupun FFA



May

COMING SOON



# Let's Connect



@wisconsinffa



Wisconsin Association of FFA



@wi\_ffa\_section6



Wisconsin FFA - Section 6



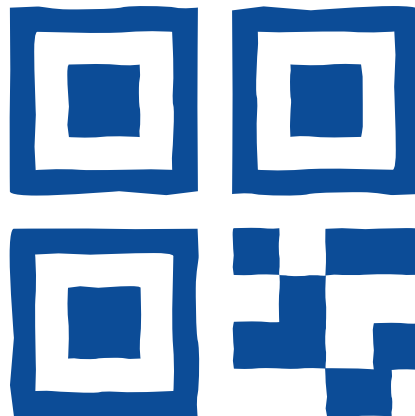
@wisconsin\_ffa



@wisconsinffa

## Member Of The Month

Know an amazing Section 6 member  
who goes above and beyond?  
Celebrate them by nominating them  
for Member of the Month right  
here!

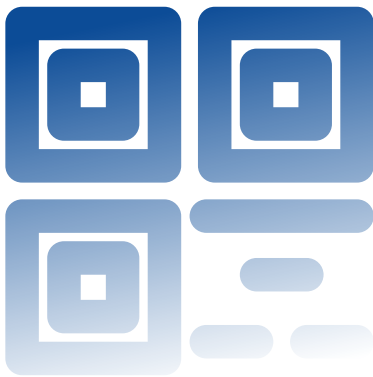


*Right-click on  
the QR code.  
and it will take  
you directly to  
the link.*

# Let's Connect

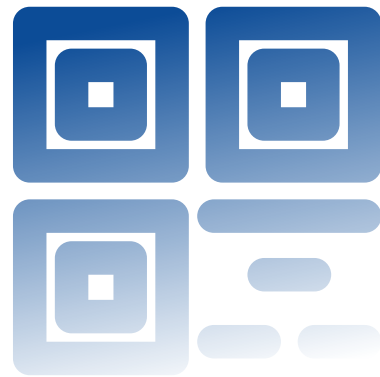
## SAE Sunday

SAE Sundays are open to all members who want to showcase their Supervised Agricultural Experience (SAE). It's a chance for members to be recognized for their hard work and dedication.



## Service Project Recognition

Service Project Recognition highlights chapters that have carried out a project to give back to their community. It's an opportunity for members and teachers to be celebrated for their impact and commitment!



## Teacher Appreciation

Is there a teacher in your life who inspires, supports, and truly makes a difference? Help us shine a spotlight on their amazing work by nominating them for the Teacher Appreciation Program, where they'll be honored on the state's social media page!



*Right-click on the QR code, and it will take you directly to the link.*

# Directory



**Section 1:**  
**Harley Prill**  
Vice President  
[hprill@wisconsinffa.org](mailto:hprill@wisconsinffa.org)



**Section 2:**  
**Taniele Ducommun**  
Vice President  
[tducommun@wisconsinffa.org](mailto:tducommun@wisconsinffa.org)



**Section 3:**  
**Corbyn Weber**  
Reporter  
[cweber@wisconsinffa.org](mailto:cweber@wisconsinffa.org)



**Section 4:**  
**Ava Forde**  
Secretary  
[aforde@wisconsinffa.org](mailto:aforde@wisconsinffa.org)



**Section 5:**  
**Sam Mell**  
Vice President  
[smell@wisconsinffa.org](mailto:smell@wisconsinffa.org)



**Section 6:**  
**Brooke Luedtke**  
Treasurer  
[bluedtke@wisconsinffa.org](mailto:bluedtke@wisconsinffa.org)



**Section 7:**  
**Parker Smith**  
Vice President  
[psmith@wisconsinffa.org](mailto:psmith@wisconsinffa.org)



**Section 8:**  
**Evan Retzlaff**  
Parliamentarian  
[eretzlaff@wisconsinffa.org](mailto:eretzlaff@wisconsinffa.org)



**Section 9:**  
**Layten Sobieski**  
Sentinel  
[lsobieski@wisconsinffa.org](mailto:lsobieski@wisconsinffa.org)



**Section 10:**  
**Max Luedtke**  
Vice President  
[mluedtke@wisconsinffa.org](mailto:mluedtke@wisconsinffa.org)



**Section 2:**  
**Amalia Draxler**  
President  
[adraxler@wisconsinffa.org](mailto:adraxler@wisconsinffa.org)



# Thank You Partners



## FFA Leadership

*Partners*

### Platinum



### Gold

### Silver

AgCountry Farm Credit Services    Culvers    Seneca Foods

### Bronze

Festival Foods  
Case IH / CNH Capital  
Elkhorn FFA Alumni  
Badger State Ethanol, LLC

Anderson Pharms Endowment  
H.H. Thomsen Endowment 14  
Wisconsin Pork Association  
GreenStone Farm Credit Services